

## **Forms wrapper for Oracle Data Visualization Components**

### **About**

Our company wanted to be able to visualize data in Forms 10 using graphs and gauges. For some time now we have been using the Forms BI Bean Graph Integration Wrapper created by Frank Nimphius. This wrapper enabled the use of BI Beans graphs in Oracle Forms. Since then Oracle has updated the visualization components with additional functionality like displaying data using gauges. To be able to use this functionality in Forms we have heavily modified the BI Beans wrapper to include the Oracle visualization components from version 11g Release 1 (11.1.1.0.1).

### **Requirements**

Since the visualization components are compiled with Java JDK version 1.6, a Java runtime environment (JRE) at version 1.6 or higher is required on the client machine running the Forms application.

### **Modifications to the original wrapper**

There are numerous modifications to the original wrapper created by Frank Nimphius to provide some, but not all, functionality provided by the Oracle Data Visualization Components. Because we were already using the original wrapper we wanted full backwards compatibility so if all requirements are met this updated wrapper is a drop-in replacement for the original wrapper.

### **Installation**

In order to use the visualization components the file "FormsGraph.jar" must be downloaded to the client from the application server.

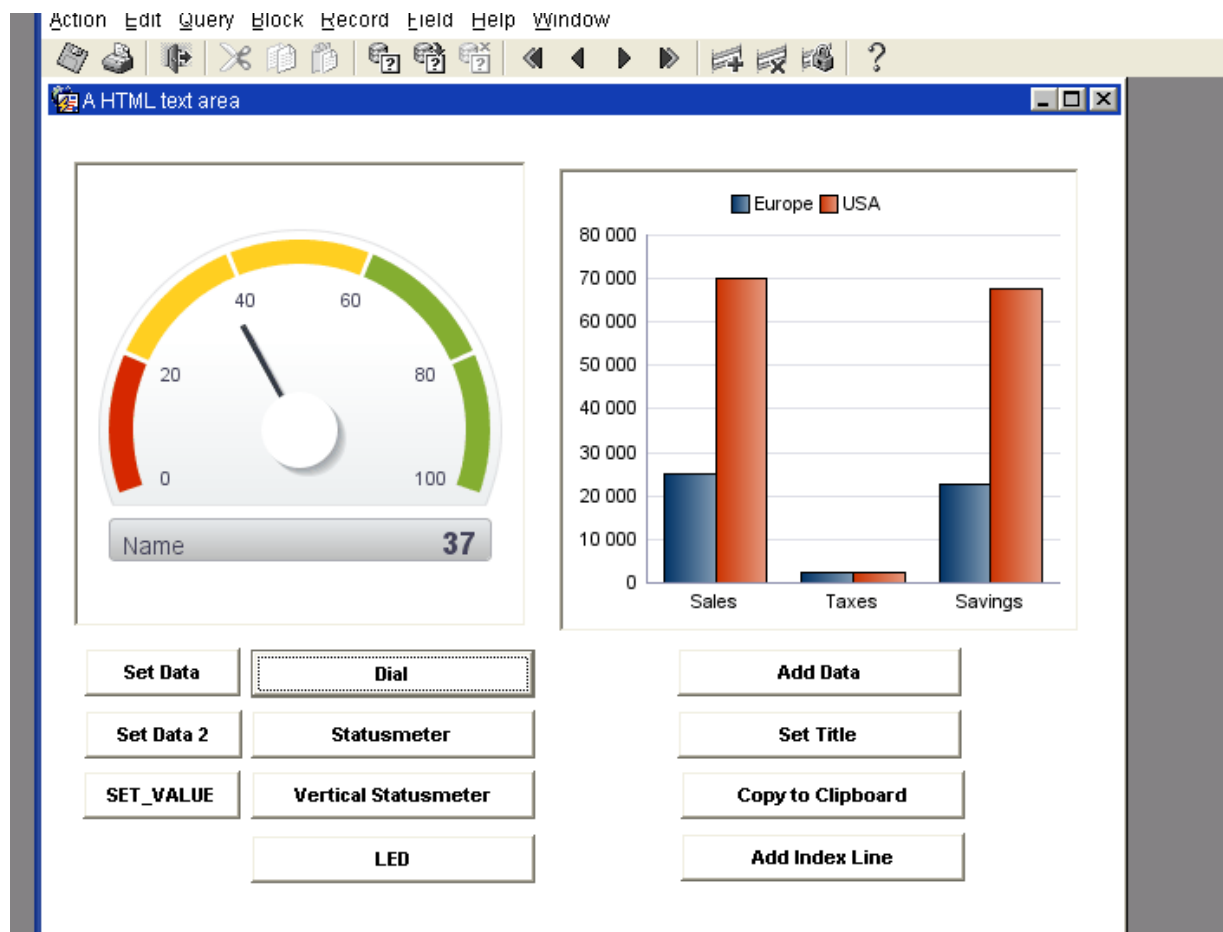


Figure 1. Forms wrapper for the Oracle Visualization Components displaying a gauge and a graph